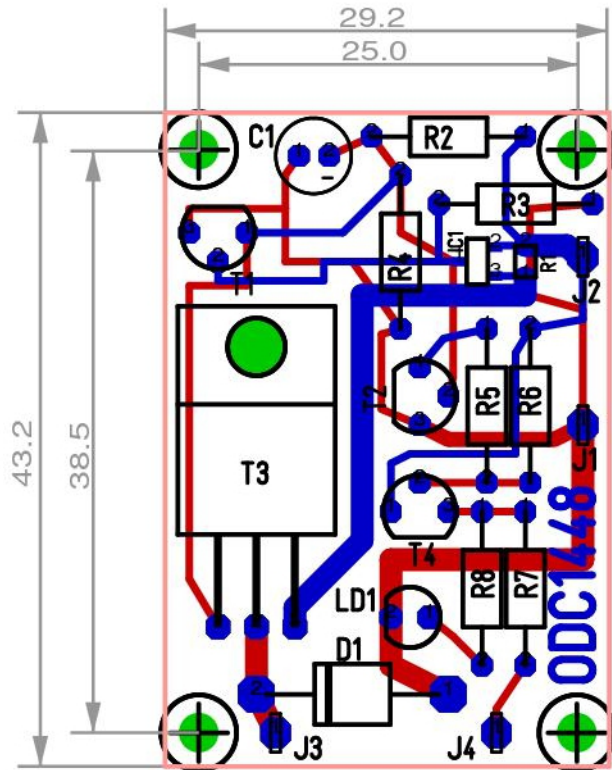


Overdrive Controller ODC1448

Layout

This PCB can be used with a plastic case, HAMMOND 1551 RFL (50x50x20 mm) [CONRAD 534305]. Mounting holes match this case.



Stranded wires can be soldered to the J1 ... J4 solder lugs and a single hole in the case may bring them to the outside of the case.

Overdrive Controller ODC1448

Installation

As the yellow wire from the OD switch is routed into the engine compartment and there connected by a bullet connector to the yellow/red wire going to the gear box switch, the ODC can be installed nearby and wired without changing the original connectors. Therefore it is a matter of seconds to change back.



Original wiring: Yellow wire connected to yellow/red wire



ODC wired in series.

Warning light

This is not mandatory but a great help.



For the warning light I decided to use a blinking 5 mm LED in the dash board using a small transparent calotte, that is hardly seen when not active, but quite aggressive when ON!
Any other 12V LED may be used as long as the current is less than 50 mA.